

Barbara Laube



Barbara Laube

Morning Has Broken

February 12 - March 20, 2022

Gold/scopophilia
594 Valley Road
Mews Courtyard
Montclair, NJ 07042





Saucers of Milk, 2021, Oil and gold leaf on linen, 2" x 1.75"

Barbara Laube

These works are a way of repairing, an offering and a form of prayer

They are a way of making sense of my life my loves and beliefs

They are about questioning and the acceptance of not knowing

They reflect my inner and outer life

They teach me and I follow

I cut up of old paintings,

the macro has become micro and

and past and present have merged

The familial and collective transitioning of the world

Piecing together a loved one's psyche

Think of them as a cat. I cannot know their mind

I can offer saucers of milk

The work is complete when it has transcended the materials and a new presence is born

They are alive and ever changing



Morning Has Broken, 2022, Oil on linen and panel, 5" x 4"



Morning Has Broken 2, 2022, Oil on linen and panel, 8" x 6"



Pieced Together 1, 2021, Oil and jade glue on linen and panel, 5" x 6"



Light in Darkness, 2021, Oil and jade glue on canvas, 8" x 5"



Dorothy's Dress, 2022, Oil on linen, 15" x 8"



The Veils, 2021, Oil on linen, 12" x 5.5"



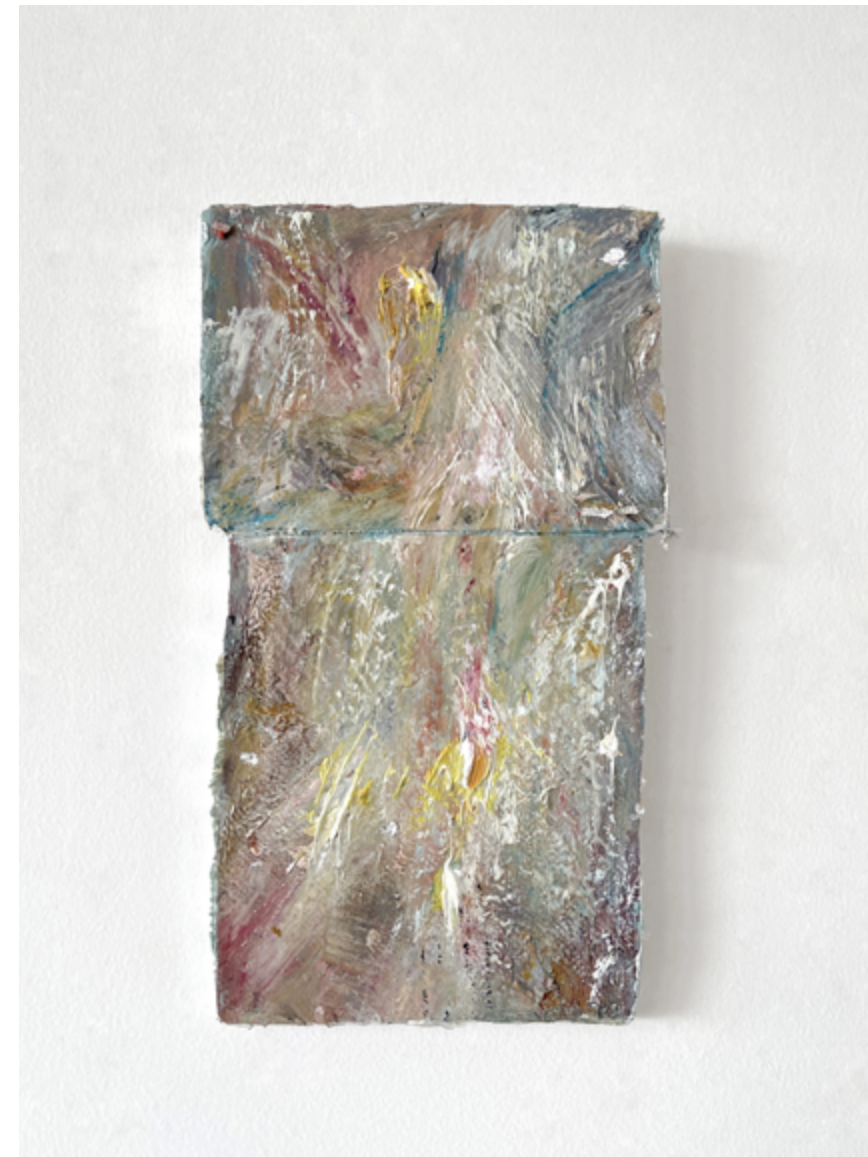
Darkness Travels at the Speed of Light, 2021, Oil on canvas, 7.5" x 4"



Morning, 2021, Oil on linen, 8" x 4.5"



Misguided Angel Love You Till the Day I Die, 2021, Oil and jade glue on linen, 7" x 4"



Misguided Angel 2, 2021, Oil and silver leaf on linen, 7" x 4"



The Veils Are Thin 2, 2021, Oil and jade glue on linen, 9" x 4.5"



The Veils Are Thin, 2021, Oil on linen and panel, 9" x 4"



The Veils 2, 2021, Oil on linen, 8" x 4"



George, 2021, Oil and gold leaf on canvas, 7.5" x 6"



But Soft, 2021, Oil on panel, 4" x 4"



Second Beach, 2021, Oil on canvas and wood, 5" x 3.5"



Abadiania, 2021, Oil and silver leaf on panel, 3.5" x 4"



Dark Star, 2021, Oil on linen and wood, 4" x 3"



Abadiania 2, 2021, Oil on panel, 5" x 3"



Orphic, 2021, Oil on panel, 4.75" x 3.75"

Barbara Laube

Mostly self-taught, Barbara Laube has always painted. Her decade's long painting practice has taken her to Italy, France, Spain, Germany and South America. She has shown extensively in New York, including Zurcher Gallery, M. David & Co., The Painting Center, Carter Burden Gallery, The Bowery Gallery and Sideshow Gallery. She has also shown at Kent State University in Ohio, New Mexico, Illinois, Washington, California, New Jersey, and Texas. She will have a solo show this February 2022 at Gold/Scopophilia in Montclair New Jersey. Ms. Laube lives and works in Riverdale, New York.

Catalogue Design: Shazzi Thomas

Photography: Barbara Laube

